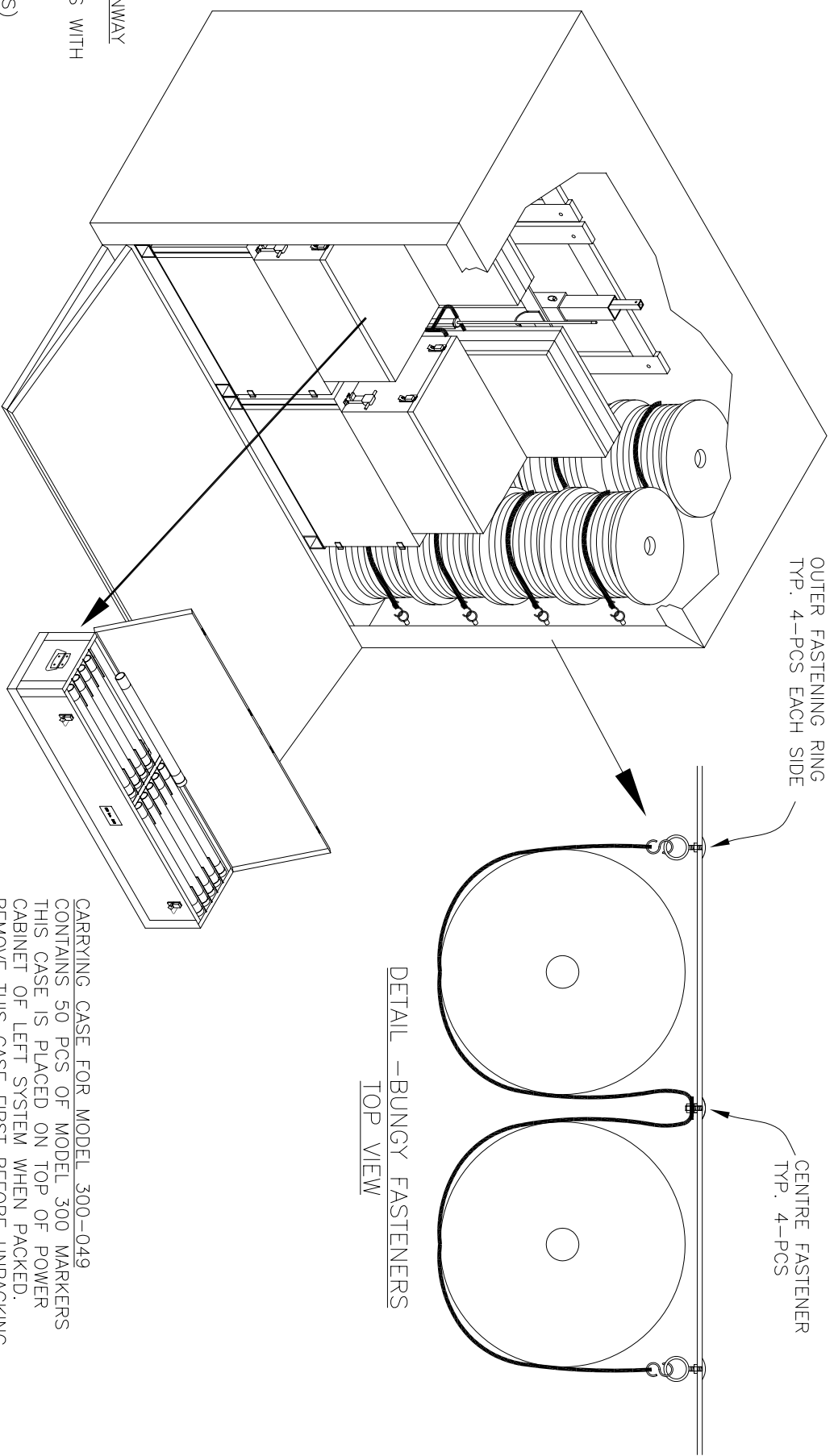


- TO UNLOAD THE PORTABLE CARRIERS FROM THE BUNION:
- REMOVE THE MODEL 300-049 CARRYING CASE
  - REMOVE BATTERIES
  - REMOVE POWER CONTROL CABINET
  - INSERT THE TWO END CARRIER EXTENSION ARMS INTO THE END OF THE CARRIER FRAME
  - PULL THE CARRIER AWAY FROM THE BUNION WALL
  - INSERT 12 mm SECURING PINS
  - DRAG THE CARRIER OUT OF THE BUNION FAR ENOUGH TO INSERT THE BACK CARRIER ARMS AND SECURING PINS
  - LIFT THE PORTABLE CARRIER WITH ONE MAN ON EACH CARRIER ARM -OR- USE OPTIONAL WHEEL ASSEMBLIES ON POWER CABINET END
  - TRANSPORT THE CARRIER TO ITS FIELD POSITION AND ASSEMBLE
  - REMOVE THE CABLE REELS AND TRANSPORT TO FIELD POSITION AND ATTACH

- THE BUNION CONTAINING THE PORTABLE RUNWAY ILLUMINATION SYSTEM WILL CONTAIN:
- 2-COMplete RUNWAY ILLUMINATION SYSTEMS WITH CARRIER (ONE UNIT EACH END)
  - 8-REELS CABLE
  - 1-MODEL 300-049 CARRYING CASE (49 PCS)



CARRYING CASE FOR MODEL 300-049  
CONTAINS 50 PCS OF MODEL 300 MARKERS  
THIS CASE IS PLACED ON TOP OF POWER  
CABINET OF LEFT SYSTEM WHEN PACKED.  
REMOVE THIS CASE FIRST BEFORE UNPACKING.

**NOTES:**

- MAKE SURE 12 mm SECURING PINS ARE IN PLACE IN THE CARRIER EXTENSION ARMS BEFORE ATTEMPTING TO MOVE THE CARRIER
- CARRY UNIT INTO FINAL POSITION BEFORE ATTEMPTING TO UNPACK AND ASSEMBLE
- PLACE CARRIER IN FIELD WITH SOLAR PANEL FACING DUE SOUTH
- ALSO SEE DRAWING No.'s M-2-A01, A03, A04A

**REVISIONS:** 07/28/96 - /SMJ APPROVED BY: GH-07/28/96 - FAX  
Modify carrying case for model 300-049

**REGINALD BENNETT INTERNATIONAL Inc. RBI**  
"OUR PRODUCTS SAVE LIVES"

D/WG NAME: Portable Runway Illumination System -Bunion Loading		VIEW: Iso-Assembly	
DATE: (MM/DD/YY) 04/10/95	DRAWN BY: Steve McCarty	MATERIAL: N	ISSUED TO: RBI001
SCALE: None	UNITS: [K] D BY: mm	FILE NAME: RB D CARY3	DWG No.: M-2-A02
PATENT PENDING			